



Lightweight, High-Performance Aluminum D-Sub Backshells

ITT Cannon expands its robust portfolio of D-Subminiature solutions with new Aluminum D-Sub Backshells, catering to the increasing demand for weight reduction in harsh-environment applications.



Harsh-environment applications, from aerospace electrical and wiring interconnect systems (EWIS) to military vehicles and commercial satellites, are increasingly sensitive to weight considerations without compromising on Electromagnetic Interference (EMI) Shielding and maximum wire termination space and protection.

ITT Cannon's new aluminum backshell technology meets all harsh-environment performance requirements while providing over 50% weight reduction compared to traditional D-Sub backshells. This, combined with Cannon's robust portfolio of high-performance I/O solutions, provides customers with a full range of reliable solutions for cabled applications.

Features & Benefits

- Straight, 45°, and 90° cable exit
- Optimal EMI shielding performance with minimal air gaps
- Innovative, lightweight A380 aluminum construction
- Electroless Nickel Plating
- 360° compression shielding
- Front mounting with #4-40 fillister head screws
- Layout with side mount slots accommodating ty-wrap or #4-40 fillister head screws
- RoHS and REACH Compliant



Markets



Aluminum D-Sub Backshell Ordering Guide



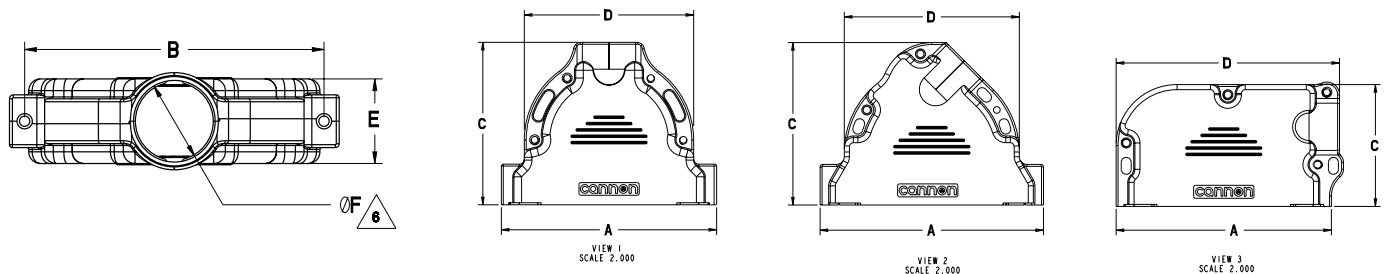
	1- Series	2- Shell Size	3- Type	4- Orientation	5- Entry Size Code	6- Mounting Hardware Code
PN Example	D	E	BS	S	09	0

1 - Series	
D	D-Subminiature
2 -Shell Size	
E	Size 9 (MIL-DTL-24308 Size 1)
A	Size 15 (MIL-DTL-24308 Size 2)
B	Size 25 (MIL-DTL-24308 Size 3)
C	Size 37 (MIL-DTL-24308 Size 4)
D	Size 50 (MIL-DTL-24308 Size 5)

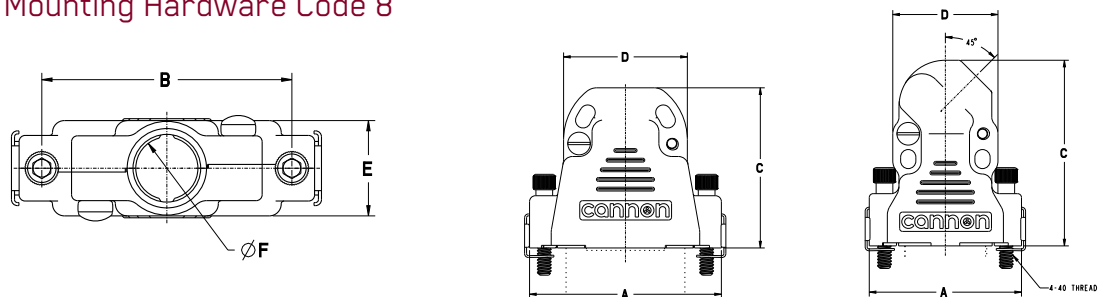
3- Type	
BS	Backshell
4 - Orientation	
S	Straight Exit
A	45 Degree Exit
B	90 Degree Exit (0 Code Only)
5 - Entry Size Code	
09, 12, 15, 17 - See Table Below	

6- Mounting Hardware Code*		
0	Backshells & Closure Screws Only	<div>8 Backshells with 2 Jackscrews, 2 Clips & Closure Screws</div> <p>*For additional information or to order hardware separately, please reference next page.</p>
1	Jackpost set	
2	Spring Latch Set	
3	Spring Latch Plate	
4	Slide Lock Plate with Screws	
5	Slide Lock Locking Posts	
6	Tie Down Straps	
7	Rack Mount Hardware	

Backshell Drawings for Mounting Hardware Code 0-7



Backshell Drawings for Mounting Hardware Code 8



Hardware Code 0		Hardware Code 8		Size Code	Entry Code	Angle	A ± .06	B ± .010	C ± .06	D ± .06	E ± .06	ØF ± .02	Weight (g) Less Hard- ware*	Tie Down Strap	Screw QTY
Descriptive Part Number	Numerical Part Number	Descriptive Part Number	Numerical Part Number												
DEBS090	070372-0001	DEBS003S098	070372-0048	E	09	STR	1.23	.984	1.25	.75	.58	.35	10.4	-5	2
DEBSA090	070372-0002	DEBS003A098	070372-0049	E	09	45°	1.23	.984	1.50	.75	.58	.35	12.6	-5	2
DEBSB090	070372-0003	NA		E	09	90°	1.23	.984	0.95	1.33	.58	.35	11.4	-5	2
DABSS090	070372-0004	DABS003S098	070372-0050	A	09	STR	1.55	1.312	1.30	1.00	.15	.35	11.1	-5	2
DABSA090	070372-0005	DABS003A098	070372-0051	A	09	45°	1.55	1.312	1.80	1.00	.58	.35	17.4	-5	2
DABSB090	070372-0006	NA		A	09	90°	1.55	1.312	1.10	1.65	.58	.35	15	-5	2
DBBSS120	070372-0007	DBBS003S128	070372-0052	B	12	STR	2.10	1.852	1.80	1.48	.58	.35	20.2	-1	2
DBBSA120	070372-0008	DBBS003A128	070372-0053	B	12	45°	2.10	1.852	1.80	1.48	.58	.47	21.8	-1	3
DBBSB120	070372-0009	NA		B	12	90°	2.10	1.852	1.20	2.20	.58	.47	18	-1	3
DCBSS150	070372-0010	DCBS003S158	070372-0054	C	15	STR	2.75	2.500	2.00	2.16	.58	.58	29.3	-1	4
DCBSA150	070372-0011	DCBS003A158	070372-0055	C	15	45°	2.75	2.500	2.00	2.16	.58	.58	27.9	-1	3
DCBSB150	070372-0012	NA		C	15	90°	2.75	2.500	1.50	2.84	.58	.58	29.7	-1	3
DDBSS170	070372-0013	DDBS003S178	070372-0056	D	17	STR	2.65	2.406	2.00	2.09	.69	.65	29.9	-1	4
DDBSA170	070372-0014	DDBS003A178	070372-0057	D	17	45°	2.65	2.406	2.00	2.09	.69	.65	27.2	-1	3
DDBSB170	070372-015	NA		D	17	90°	2.65	2.406	1.50	2.75	.69	.65	32.7	-1	3

*Mounting Hardware 8 add 2.3 grams weight as supplied with hardware

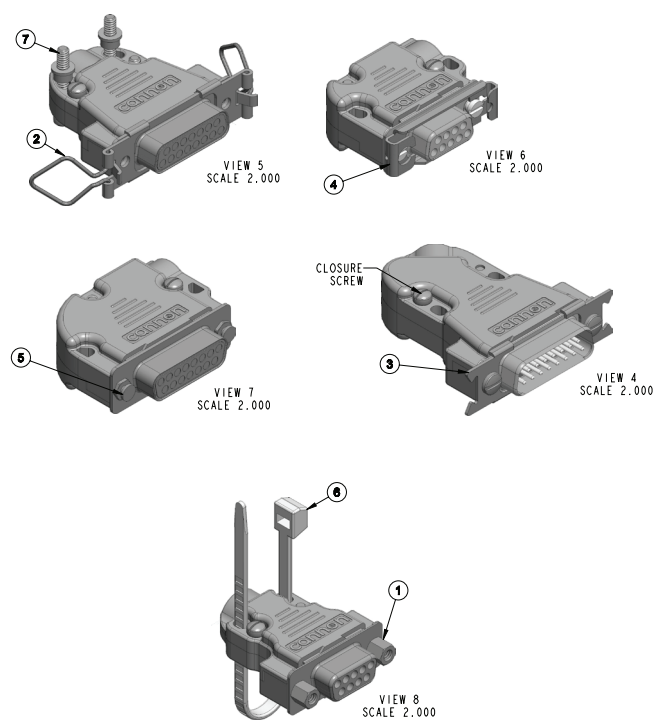
Closure Screw Kits

Part Number	Package Quantity
070372-0045	2 Screws
070372-0046	3 Screws
070372-0047	4 Screws

Mounting Hardware For Hardware Code 0-7

Code	Description	Part Number	Shell Size	Material
1	Jackpost Set (2)	D70372-0016	E, A, B, C, D	Stainless Steel
2	Spring Latch Set	D70372-0017	E, A, B, C,	
		D70372-0018	D	
3	Spring Latch Plate	D70372-0019	E, A, B, C,	
		D70372-0020	D	
4	Side Latch With Screws	D70372-0021	E	
		D70372-00122	A	
		D70372-0023	B	
		D70372-0024	C	
		D70372-0025	D	
5	Slide Latch Locking Posts	D70372-0026	E, A, B, C, D	
Attachment Option				
6	Tie Down Strap	D70372-0027	E, A	Nylon
		D70372-0028	B, C, D	
7	Rack Mount Hardware, 4-40, Bushing Only (2)*	D70372-0029	E, A, B, C, D	Aluminum, Nickel Plating

*0.125" long through hole standoff for a 4-40 screw.



D-Subminiature Connectors

cannon

Invented by Cannon engineers in 1952 for aircraft radio systems, the D-Subminiature was designed as a smaller, lightweight rectangular alternative to larger, heavier connectors of the time. Today, Cannon continues its legacy of innovation through highly engineered D-Sub connector styles, sizes, configurations and accessories. From rocket launchers and telecommunications, to avionics and high-speed rail, its performance, reliability and versatility have made this Cannon invention one of the most widely used connectors in the world.



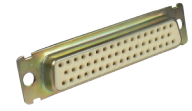
Non-Magnetic Series

D*M, D*MM, D*MA with NM, NMB option connectors are used when non magnetic characteristics are required.



D*H

Hermetic Military D connectors are designed to meet environmental conditions of extreme pressure differential.



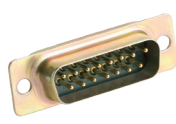
MIL-DTL-24308*

These high reliability D-Sub connectors are the finest quality and are qualified to MIL-DTL-24308.



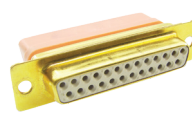
D*MAM

D*MAM crimp connectors are designed according to MIL-DTL-24308.



D*MM

D*MM straight PCB connectors are designed according to MIL-DTL-24308.



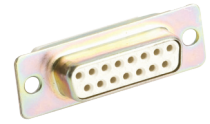
GD*

GD* connectors provide high-density and moisture protection.



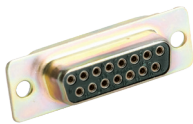
2D

2D connectors feature double the contact density in the same insert area.



D*MA

D*MA crimp connectors are designed according to MIL-DTL-24308



D*M

D*M straight PCB connectors are equivalent to MIL-DTL-24308 qualified versions (except for finishes).



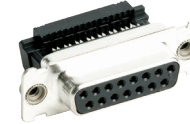
Stainless Steel

A broad range of D-Sub connectors are available with stainless steel shells for corrosion resistance.



D*NG

D*NG pressfit connectors provide a low-cost alternative to traditional through hole solder contacts (straight only).



D*SF

Speedy D connectors terminate ribbon cables without stripping and without splicing.



D*U

D*U is a low-cost, crimp type D-Subminiature series.



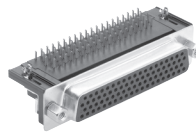
D*

D* connectors are available for high performance uses according to DIN 41652.



ZD*

ZD* connectors are available for applications where price is the primary driver.



ZD*A

ZD*A high density connectors are available for applications where price is the primary driver.



D*A

D*A crimp connectors are available for applications where price is the primary driver.



Combo-D

Combo-D connectors offer an industry standard shield I/O interconnect, with the flexibility of a customized special.

Connect with your ITT Cannon representative today or visit us at ittcannon.com

Follow us 

NORTH AMERICA

USA - Irvine, CA
+1.800.854.3028

MEXICO - Nogales
+52.631.3110050

EUROPE

GERMANY - Weinstadt
+49.7151.699.0

UK - Basingstoke
+44.1256.347400

ITALY - Lainate
+39.02938721

FRANCE
+33.1.60.04.93.93

ASIA PACIFIC

SINGAPORE
+65 66974205

JAPAN - Kanagawa
+81.462.57.2010

KOREA
+82.2.702.7111

CHINA - Shenzhen City
+86.755.2726.7888

HONG KONG
+852.2732.2720